

# Umler<sup>®</sup> Bulk Upload Transactions CSV File Specifications



7001 Weston Parkway, Suite 200  
Cary, North Carolina 27513

© 2017 Railinc Incorporated. All Rights Reserved.

Last Updated: December 2017



## Table of Contents

<b>Umler Bulk Upload Transactions</b> .....	<b>1</b>
Transaction Basics .....	1
CSV Format .....	1
Transaction Types.....	3
Creating CSV Transaction Files .....	3
First Time Users.....	4
<b>Create Pool Header</b> .....	<b>5</b>
<b>Delete Pool Header</b> .....	<b>6</b>
<b>Update Pool Header</b> .....	<b>7</b>
<b>Update Pool Assignment</b> .....	<b>8</b>
<b>Create Company-Specific Equipment Group</b> .....	<b>9</b>
<b>Edit Company-Specific Equipment Group</b> .....	<b>10</b>
<b>Delete a Company-Specific Equipment Group</b> .....	<b>11</b>
<b>Add Equipment to Company-Specific Equipment Group</b> .....	<b>12</b>
<b>Remove Equipment from a Company-Specific Equipment Group</b> .....	<b>13</b>
<b>Remove Lessee</b> .....	<b>14</b>
<b>Update Equipment Management Codes</b> .....	<b>15</b>
<b>Report Car Grade Inspection</b> .....	<b>17</b>
<b>Update Equipment Maintenance Party</b> .....	<b>19</b>
<b>Report Air Brake Test Inspection</b> .....	<b>20</b>
<b>Report Door Lube Inspection</b> .....	<b>22</b>
<b>Report Autorack Activity</b> .....	<b>24</b>
<b>Report Vehicular Flat Car Certification</b> .....	<b>26</b>
<b>Report FRA Locomotive Inspection</b> .....	<b>28</b>
<b>Report Reflectorization Event</b> .....	<b>30</b>
<b>Add Equipment</b> .....	<b>32</b>
<b>Add Equipment—Multiple Unit Car</b> .....	<b>34</b>
<b>Modify Equipment</b> .....	<b>37</b>
<b>Delete an Element from a Record</b> .....	<b>38</b>
<b>Delete a Component from a Record</b> .....	<b>39</b>
<b>Upload Wheelset Component Registry</b> .....	<b>40</b>
Component Registry CSV Uploads .....	41
Registration Upload File Preparation.....	41
Association Upload File Preparation .....	42
Uploading the CSV Component Registry File.....	43
<b>Index</b> .....	<b>45</b>

## List of Exhibits

Exhibit 1. New Umler Data Elements.....	2
Exhibit 2. New Umler Action Codes .....	2
Exhibit 3. Bulk Upload Transaction Types.....	3
Exhibit 4. Transaction Excel Save As File Options.....	4
Exhibit 5. Create Pool Header Elements.....	5
Exhibit 6. Create Pool Header Record (in Excel) .....	5
Exhibit 7. Delete Pool Header Record (in Excel) .....	6
Exhibit 8. Update Pool Header Elements.....	7
Exhibit 9. Update Pool Header Record (in Excel) .....	7
Exhibit 10. Update Pool Assignment Elements .....	8
Exhibit 11. Update Pool Assignment—Remove Equipment Record (in Excel).....	8
Exhibit 12. Update Pool Assignment—Add Equipment Record (in Excel) .....	8
Exhibit 13. Create Company-Specific Equipment Group Elements.....	9
Exhibit 14. Create Company-Specific Equipment Group (in Excel).....	9
Exhibit 15. Edit a Company-Specific Equipment Group Elements .....	10
Exhibit 16. Edit Company-Specific Equipment Group (in Excel).....	10
Exhibit 17. Delete Company-Specific Group Elements .....	11
Exhibit 18. Delete Company-Specific Group (in Excel) .....	11
Exhibit 19. Add Equipment to Company-Specific Equipment Group Elements.....	12
Exhibit 20. Add Equipment to Company-Specific Equipment Group (in Excel).....	12
Exhibit 21. Remove Equipment from Company-Specific Equipment Group Elements.....	13
Exhibit 22. Remove Equipment from Company-Specific Equipment Group (in Excel).....	13
Exhibit 23. Remove Lessee Elements.....	14
Exhibit 24. Remove a Lessee record formatted (in Excel for New Umler format) .....	14
Exhibit 25. Remove a Lessee Record (in Excel) .....	14
Exhibit 26. Update Equipment Management Elements .....	15
Exhibit 27. Update Equipment Management Codes record (in Excel for new Umler format).....	15
Exhibit 28. Update Equipment Management Codes Transaction (in Excel) .....	16
Exhibit 29. Report Car Grade Inspection Elements .....	17
Exhibit 30. Report Car Grade Inspection (in Excel for new Umler format).....	17
Exhibit 31. Report Car Grade Inspection (in Excel).....	18
Exhibit 32. Updating Equipment Maintenance Party Elements.....	19
Exhibit 33. Update Equipment Maintenance Party (in Excel for new Umler format).....	19
Exhibit 34. Update Equipment Maintenance Party (in Excel).....	19
Exhibit 35. Report Air Brake Test Inspection Elements.....	20
Exhibit 36. Report Air Brake Test Inspection (in Excel for new Umler format).....	20
Exhibit 37. Air Brake Test Inspection (in Excel).....	21
Exhibit 38. Report Door Lube Inspection Elements .....	22
Exhibit 39. Door Lube Inspection (in Excel for new Umler format).....	22
Exhibit 40. Door Lube Inspection (in Excel).....	23
Exhibit 41. Report Autorack Activity Elements .....	24
Exhibit 42. Autorack Activity Record in Excel format.....	24
Exhibit 43. Report Autorack Activity (in Excel) .....	25
Exhibit 44. Vehicular Flat Car Certification Elements .....	26
Exhibit 45. Vehicular Flat Car Certification Record in Excel format.....	26
Exhibit 46. Vehicular Flat Car Certification (in Excel) .....	27
Exhibit 47. FRA Locomotive Inspection Elements .....	28
Exhibit 48. FRA Locomotive Inspection Record in Excel format.....	28

Exhibit 49. FRA Locomotive Inspection (in Excel) .....	29
Exhibit 50. Report Reflectorization Event Elements .....	30
Exhibit 51. Reflectorization Event in Excel format .....	30
Exhibit 52. Reflectorization Event (in Excel).....	31
Exhibit 53. Delete Element (in Excel format in new Umler format) .....	38
Exhibit 54. Delete Element A057 (in Excel format in new Umler format) .....	38
Exhibit 55. Browse Files to Find a Components CSV .....	40
Exhibit 56. CSV Wheelset Upload Template (in Excel) .....	41
Exhibit 57. Association CSV Upload Template (in Excel).....	42
Exhibit 58. Choose File (for Upload) .....	43
Exhibit 59. Browse Files to Find a Components CSV (after successful submission) .....	43
Exhibit 60. E-Mail for Upload Submission Status.....	44

## Umler Bulk Upload Transactions

Umler CSV transaction records in the correct format can be uploaded as a batch using the Bulk Upload Transactions function.

---

### Transaction Basics

Umler allows comma delimited file uploads for the following transactions: create pool header, delete pool header, update pool header, update pool assignment, remove lessee, update transportation codes, report car grade inspections, report locomotive inspections, report auto rack inspections, and other inspections and certifications. Each transaction type has a defined set of parameters specific to that transaction type. This option is intended for the advanced user, who must be granted specific access to this function by the company administrator. The user must possess Bulk Upload Access permission.

### CSV Format

A CSV (Comma Separated Value) file may contain many lines. In version 3.2 format, each line contains keys and values separated by a comma. In version 3.2 format, each element edit appears on an individual line, and is used for the Add/Modify/Delete of equipment and components and elements within that equipment.

#### 3.1 Format—Legacy UMLER

Each line starts with the key identifier for a transaction “TRAN” followed by a transaction type, a unit (pool/equipment), and elements of a unit (pool/or equipment). The transaction identifier and a transaction type are separated by a comma. A unit is composed in the form of unit identifier and unit value. A unit ID and a unit value are separated by a comma. Elements are composed in the form of element id and element value. An element ID and an element value are separated by a comma. Each line can update multiple elements of a pool/equipment.

#### 3.2 Format—New Umler

Each lines starts with a key identifier as to what action is going to occur on that line. This code can indicate that an element is being added (ECA), modified (ECC) or deleted (ECD) Each of these codes is referred to as the Transaction Type. In addition the Transaction type can have multiple Action Codes to indicate in detail whether this code is being done on a single element or a component structure.

The layout for the 3.2 CSV Bulk Upload now reflects the new component structure of the Umler records. This requires that additional information be included in the added/updating/editing of individual elements within a record. This new structure changes the CSV format from a horizontal (linear) to vertical (stacked) format. Where the format prior to 3.2 was one line for the entire record, it now is one line for each element in the record. New Umler data elements are described in [Exhibit 1](#).

**Exhibit 1. New Umler Data Elements**

Column fields	Description	Required/Optional
Transaction Type	Transaction type for the transaction ECA, ECC, ECD, ABT ARC etc.	R
Equipment ID	The 14-character equipment initial/number of transaction	R
Action Code	One-character Action code to indicate element/component add/update/delete	R
Element ID/Parent Component ID	The element ID/parent Component ID for the row. UMMD, 0002, TRUCK, TRUCKSYS etc.	O (empty when adding target component on Base)
Element Value/Parent Component Location	The value for the element being added/edited/ location of the parent component of the component being added	O (empty when adding target component on Base)
Target Component ID	The target component ID	O (empty when adding/ updating elements on Base)
Target Component Location ID	The target component location ID value	O (empty for delete action or when adding/ updating elements on Base)

**Exhibit 2. New Umler Action Codes**

Action	Action Code
Adding/Updating an element	E
Removing an element	R
Adding a component	A
Removing a component structure	D

### Sample 3.2 Format

Each value is assigned to a particular column in the CSV starting in column 1 with the Transaction Type.

Transaction Type, Equipment ID, Action Code, Element ID/Parent Component, ID/Element Value/Parent Component Location, Target Component ID, Target Component Location ID

Not every column must be completed when creating a CSV and the examples that follow in this document will show what is required.

## Transaction Types

The bulk upload supports the following transaction types in CSV format:

**Exhibit 3. Bulk Upload Transaction Types**

Transaction Type	Description
ABT	Report Air Brake Test
ARC	Autorack Certification (Activity Type 970)
ARI	Autorack Inspection (Activity Type 970A)
ARR	Autorack Repair (Activity Type 992)
CGI	Car Grade Inspection
CSI	Report FRA Locomotive Inspection (60-day Cab Signals Inspection)
DLI	Report Door Lube Inspection
ECA	Equipment Characteristics Add
ECC	Equipment Characteristics Change
ECD	Equipment Characteristics Delete
FRA	Report FRA Locomotive Inspection (3-, 4-, 5-, or 8.5-year FRA Locomotive Air Brake Inspection)
FRB	Report FRA Locomotive Inspection (736-day/Biennial FRA Locomotive Inspection)
FRQ	Report FRA Locomotive Inspection (92-day/Quarterly FRA Locomotive Inspection)
FRY	Report FRA Locomotive Inspection (368-day/Annual FRA Locomotive Inspection)
GEA	Add Equipment to Company-Specific Equipment Group
GER	Remove Equipment from Company-Specific Equipment Group
GHA	Create Company-Specific Equipment Group
GHD	Delete Company-Specific Equipment Group
GHU	Edit Company-Specific Equipment Group
HA	Pool Header Add
HC	Pool Header Change
HD	Pool Header Delete
REF	Reflectorization Event
VFC	Report Vehicular Flat Car Certification

---

**Important Note:** Beginning with CSV Bulk Upload Version 3.2, all dimensional information must be in *inches format only*. So a value of 10ft 0in is entered not as 1000 but 120.

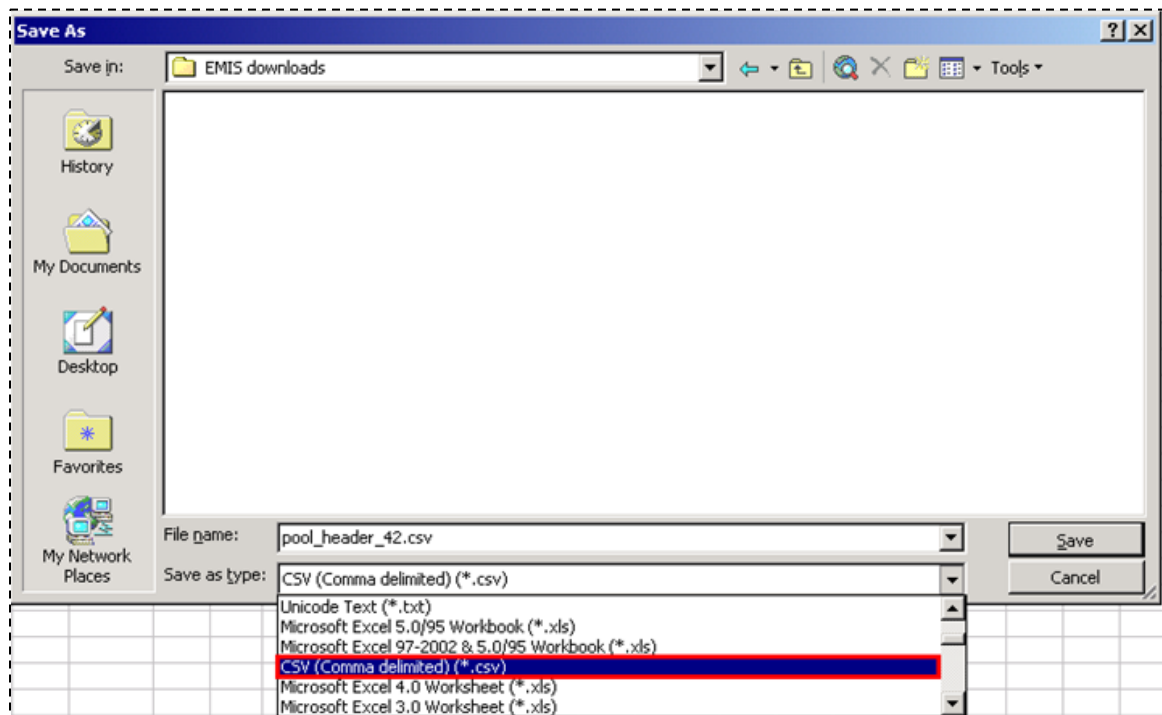
---

## Creating CSV Transaction Files

Many programs allow the user to create CSV files. In its simplest form, a CSV file is a text file with field values that are separated by commas. Using a set format, Umler can interpret uploaded CSV files. The key is to follow the expected formatting rules and placement of input data. A spreadsheet application such as Excel allows the user to create CSV files without using commas to separate input data. Each cell of the spreadsheet equates to a single portion of the input data.

If using Excel to create CSV files, make sure to use the Save As option and to select “CSV (Comma delimited) (\*.csv)” from the Save as type drop-down box ([Exhibit 4](#)).



**Exhibit 4. Transaction Excel Save As File Options**

**Note:** If using Excel to create or edit CSV files—to have leading zeros retained, specify/format the column as text.

### Specifying Text Formatting in Excel:

1. Highlight column(s) that contain leading zeros.
2. Right-click a highlighted column.
3. Select **Format Cells**. The Format Cells pop up box is displayed.
4. In the Category window, highlight **Text** and select **OK**. All highlighted columns can now accept leading zeros.

**Note:** If only a CSV file is created and there are leading zeros for some values, when the user loads the file for subsequent use, the leading zeros are dropped. The user should create the file as a .xls file, identify all columns as text, and save the completed form as a CSV file. The Excel file retains the text settings for subsequent usage.

## First Time Users

If you are new to the Umler CSV upload process, Railinc suggests practicing CSV transactions in the Umler Test system. The data in the test system should closely reflect what is in the production system.

Contact the Railinc Customer Success Center (CSC) at 1-877-RAILINC (1-877-724-5462) or [CSC@railinc.com](mailto:CSC@railinc.com) for assistance in connecting to the Umler Test system.

## Create Pool Header

This section describes the general CSV format to create pool header through bulk upload.

**Note:** Create Pool Header is a 3.1 format CSV.

The Create Pool Header transaction can contain multiple elements in pair of element ID and element value. [Exhibit 5](#) shows valid elements for creating a pool header.

**Exhibit 5. Create Pool Header Elements**

Element ID	Description	Optional/Required
P001	Pool Number	R
P002	Pool Description	R
P003	Pool Loading Location	R
P004	Pool Loading State/Province	R
P005	Pool Reporter	O
P006	Pool Type Code	R
P008	Extended Pool Description	O
P011	Pool Operator1	R
P012	Pool Operator2	O
P013	Pool Operator3	O
P014	Pool Operator4	O

Here is an example of a Pool Header transaction formatted in a text editor.

```
"TRAN", "HA", "P001", "7120098", "P002", "MyPool's", "P003", "Cary", "P004",
"NC", "P005", "", "P006", "P", "P008", "QATest", "P011", "CSXT", "P012", "", "P
013", "", "P014"
```

[Exhibit 6](#) shows a Create Pool Header record formatted in Excel.

**Exhibit 6. Create Pool Header Record (in Excel)**

	A	B	C	D	E	F	G	H	I	J	K	L	M	N	O	P	Q	R	S	T	U	V	W	X
1	1	HA	P001	7120098	P002	MyPool's	P003	Cary	P004	NC	P005		P006	P	P008	QATest	P011	CSXT	P012		P013		P014	

## Delete Pool Header

This section describes the general CSV format to delete pool header through bulk upload.

**Note:** Delete Pool Header is a 3.1 format CSV.

The Delete Pool Header transaction does not contain any other elements other than a key “P001” for a pool followed by a pool number.

Here is an example of a Delete Pool Header transaction as formatted in a text editor.

```
"TRAN" , "HD" , "P001" , "7120098"
```

[Exhibit 7](#) shows a Delete Pool Header record formatted in Excel.

**Exhibit 7. Delete Pool Header Record (in Excel)**

	A	B	C	D
1	tran	hd	p001	840001
2	tran	hd	p001	2730001
3	tran	hd	p001	8320001
4	tran	hd	p001	9060004

## Update Pool Header

This section describes the general CSV format to update pool headers through bulk upload.

**Note:** Update Pool Header is a 3.1 format CSV.

The Update Pool Header transaction can contain multiple elements in pair of element ID and element value. [Exhibit 8](#) shows valid elements for updating a pool header.

**Exhibit 8. Update Pool Header Elements**

Element ID	Description	Optional/Required
P001	Pool Number	R
P002	Pool Description	R
P003	Pool Loading Location	R
P004	Pool Loading State/Province	R
P005	Pool Reporter	O
P006	Pool Type Code	R
P008	Extended Pool Description	O
P011	Pool Operator1	R
P012	Pool Operator2	O
P013	Pool Operator3	O
P014	Pool Operator4	O

Here is an example of an Update Pool Header transaction formatted in a text editor.

```
"TRAN", "HC", "P001", "7120099", "P002", "Changing Pool Desc"
```

[Exhibit 9](#) shows a Update Pool Header record formatted in Excel.

**Exhibit 9. Update Pool Header Record (in Excel)**

	A	B	C	D	E	F
1	TRAN	HC	P001	7120099	P002	ChangingPool Desc

## Update Pool Assignment

This section describes the general CSV format to update pool assignments through bulk upload.

**Note:** Update Pool Assignment is a 3.1 format CSV.

[Exhibit 10](#) shows valid elements for updating pool assignments.

**Exhibit 10. Update Pool Assignment Elements**

Element ID	Description	Optional/Required
P001	Pool Number	R

### Remove Equipment from Pool

Here is an example of a Remove Equipment from a Pool Transaction formatted in a text editor

**Note:** P001 = "0000000" indicates unassignment).

```
"TRAN" , "ECC" , "0001" , "CSXT0000000101" , "P001" , "0000000"
```

[Exhibit 11](#) shows a Remove Equipment from a Pool record formatted in Excel.

**Exhibit 11. Update Pool Assignment—Remove Equipment Record (in Excel)**

	A	B	C	D	E	F
1	TRAN	ECC	0001	CSXT0000000101	P001	0000000

**Note:** Columns with leading zeros (C and F), must be formatted as text. See [Specifying Text Formatting in Excel](#) on page 4.

### Add Equipment to Pool

Here is an example of an Add Equipment to a Pool transaction formatted in a text editor.

```
"TRAN" , "ECC" , "0001" , "CSXT0000000101" , "P001" , "7120098"
```

[Exhibit 12](#) shows an Add Equipment to Pool record formatted in Excel.

**Exhibit 12. Update Pool Assignment—Add Equipment Record (in Excel)**

	A	B	C	D	E	F
1	TRAN	ECC	0001	CSXT0000000101	P001	7120098

**Note:** Columns with leading zeros (C), must be formatted as text. See [Specifying Text Formatting in Excel](#) on page 4.

## Create Company-Specific Equipment Group

This section describes the general CSV format to create a Company-Specific Equipment Group through bulk upload in Legacy UMLER format: **Note:** Create Company Specific Equipment Group is a 3.1 format CSV.

[Exhibit 13](#) shows valid elements for creating a company-specific equipment group:

**Exhibit 13. Create Company-Specific Equipment Group Elements**

Element ID	Element Value	Required/Optional
TRAN	GHA	R
GRID	Company-Specific Equipment Group ID	R
GRNM	Name	R
GRDS	Description	O
GRFA	Group Field A	O
GRFB	Group Field B	O
GRFC	Group Field C	O
GRFD	Group Field D	O
GRFE	Group Field E	O
GRFF	Group Field F	O
GRFG	Group Field G	O
GRFH	Group Field H	O
GRFI	Group Field I	O
GRFJ	Group Field J	O
GRFK	Group Field K	O
GRFL	Group Field L	O
GRFM	Group Field M	O
GRFN	Group Field N	O
GRFO	Group Field O	O
GRFP	Group Field P	O
GRFQ	Group Field Q	O
GRFR	Group Field R	O
GRFS	Group Field S	O
GRFT	Group Field T	O
GRFU	Group Field U	O
GRFV	Group Field V	O
GRFW	Group Field W	O
GRFX	Group Field X	O
GRFY	Group Field Y	O
GRFZ	Group Field Z	O

For example, the following transaction creates a group 8756:

```
"TRAN" , "GHA" , "GRID" , "8756" , "GRNM" , "My Group 1"
```

[Exhibit 14](#) shows a Create Company-Specific Equipment Group record formatted in Excel:

**Exhibit 14. Create Company-Specific Equipment Group (in Excel)**

	A	B	C	D	E	F
1	TRAN	GHA	GRID	8756	GRNM	My Group 1

## Edit Company-Specific Equipment Group

[Exhibit 15](#) shows the general CSV format to edit a Company-Specific Equipment Group through bulk upload in Legacy UMLER format. **Note:** Edit Company Specific Equipment Group is a 3.1 format CSV.

**Exhibit 15. Edit a Company-Specific Equipment Group Elements**

Element ID	Element Value	Required/Optional
TRAN	GHU	R
GRID	Company-Specific Equipment Group ID	R
GRNM	Name	R
GRDS	Description	O
GRFA	Group Field A	O
GRFB	Group Field B	O
GRFC	Group Field C	O
GRFD	Group Field D	O
GRFE	Group Field E	O
GRFF	Group Field F	O
GRFG	Group Field G	O
GRFH	Group Field H	O
GRFI	Group Field I	O
GRFJ	Group Field J	O
GRFK	Group Field K	O
GRFL	Group Field L	O
GRFM	Group Field M	O
GRFN	Group Field N	O
GRFO	Group Field O	O
GRFP	Group Field P	O
GRFQ	Group Field Q	O
GRFR	Group Field R	O
GRFS	Group Field S	O
GRFT	Group Field T	O
GRFU	Group Field U	O
GRFV	Group Field V	O
GRFW	Group Field W	O
GRFX	Group Field X	O
GRFY	Group Field Y	O
GRFZ	Group Field Z	O

For example, the following transaction edits the group 8756:

```
"TRAN", "GHU", "GRID", "8756", "GRNM", "My Group", "GRDS",
"Group Created for me", "GRFA", "FIELD A VALUE"
```

[Exhibit 16](#) shows an Edit Company-Specific Equipment Group record formatted in Excel.

**Exhibit 16. Edit Company-Specific Equipment Group (in Excel)**

	A	B	C	D	E	F	G	H	I	J
1	TRAN	GHU	GRID	8756	GRNM	My Group	GRDS	Group Created for me	GRFA	FIELD A VALUE

## Delete a Company-Specific Equipment Group

[Exhibit 17](#) shows the general CSV format to delete a Company-Specific Equipment Group through bulk upload in Legacy UMLER format. **Note:** Delete a Company-Specific Equipment Group is a 3.1 format CSV.

**Exhibit 17. Delete Company-Specific Group Elements**

Element ID	Element Value	Required/Optional
TRAN	GHD	R
GRID	Company-Specific Equipment Group ID	R

For example, the following transaction deletes the group 8756:

```
"TRAN" , "GHD" , "GRID" , "8756"
```

[Exhibit 18](#) shows a Delete Company-Specific Equipment Group record formatted in Excel.

**Exhibit 18. Delete Company-Specific Group (in Excel)**

	A	B	C	D
1	TRAN	GHD	GRID	8756



## Add Equipment to Company-Specific Equipment Group

[Exhibit 19](#) shows the general CSV format to add equipment to a Company-Specific Equipment Group through bulk upload in Legacy UMLER format. **Note:** Add Equipment to Company-Specific Equipment Group is a 3.1 format CSV.

**Exhibit 19. Add Equipment to Company-Specific Equipment Group Elements**

Element ID	Element Value	Required/Optional
TRAN	GEA	R
GRID	Company-Specific Equipment Group ID	R
0001	Equipment ID	R

For example, the following transaction assigns car ABCD 123456 to group 8756:

```
"TRAN", "GEA", "GRID", "8756", "0001", "ABCD0000123456"
```

[Exhibit 20](#) shows an Add Equipment to Company-Specific Equipment Group record in Excel format.

**Exhibit 20. Add Equipment to Company-Specific Equipment Group (in Excel)**

	A	B	C	D	E	F
1	TRAN	GEA	GRID	8756	0001	ABCD0000123456

**Note:** Columns with leading zeros (E), must be formatted as text. See [Specifying Text Formatting in Excel](#) on page 4.

## Remove Equipment from a Company-Specific Equipment Group

[Exhibit 21](#) shows the general CSV format to remove equipment from a Company-Specific Equipment Group through bulk upload in Legacy UMLER format. **Note:** Remove Equipment from a Company-Specific Equipment Group is a 3.1 format CSV.

**Exhibit 21. Remove Equipment from Company-Specific Equipment Group Elements**

Element ID	Element Value	Required/Optional
TRAN	GER	R
GRID	Company-Specific Equipment Group ID	R
0001	Equipment ID	R

For example, the following transaction removes car ABCD 123456 from group 8756:

```
"TRAN" , "GER" , "GRID" , "8756" , "0001" , "ABCD0000123456"
```

[Exhibit 22](#) shows a Remove Equipment from Company-Specific Equipment Group record in Excel format:

**Exhibit 22. Remove Equipment from Company-Specific Equipment Group (in Excel)**

	A	B	C	D	E	F
1	TRAN	GER	GRID	8756	0001	ABCD0000123456

**Note:** Columns with leading zeros (E), must be formatted as text. See [Specifying Text Formatting in Excel](#) on page 4.

## Remove Lessee

This section describes the general CSV format to remove lessee in bulk upload format.

[Exhibit 23](#) shows valid elements for removing a lessee.

**Exhibit 23. Remove Lessee Elements**

Element ID	Description	Optional/Required
LESE	Lessee	R

Here is an example of a Remove a Lessee record formatted in a text editor.

```
ECC,CSXT0000000101,LESE,
```

[Exhibit 24](#) shows a Remove a Lessee record formatted in Excel for the new Umler format.

**Exhibit 24. Remove a Lessee record formatted (in Excel for New Umler format)**

	A	B	C	D	E
1	ECC	CSXT0000000101	E	LESE	

**Note:** Columns with leading zeros (C), must be formatted as text. See [Specifying Text Formatting in Excel](#) on page 4.

You can use the older style of CSV to also remove the Lessee. Here is the general CSV format to remove lessee through bulk upload:

```
"TRAN", "ECC", "0001", "Equipment_ID", "LESE", ""
```

Here is an example of a Remove a Lessee record formatted in a text editor:

```
"TRAN", "ECC", "0001", "CSXT0000000101", "LESE", ""
```

[Exhibit 25](#) shows a Remove a Lessee record formatted in Excel:

**Exhibit 25. Remove a Lessee Record (in Excel)**

	A	B	C	D	E
1	TRAN	ECC	0001	CSXT0000000101	LESE

**Note:** Columns with leading zeros (C), must be formatted as text. See [Specifying Text Formatting in Excel](#) on page 4.

## Update Equipment Management Codes

This section describes the general CSV format to update transpiration codes in bulk upload format.

[Exhibit 26](#) shows valid elements for updating equipment management codes.

**Exhibit 26. Update Equipment Management Elements**

Element ID	Description	Optional/Required
TCUR	User Reported Routing Instructions	O
TCME	Mechanical Restriction	O
TCMR	Mechanical Restriction Reason	O

**Note:** One of the above elements is required.

Here is an example of the Updated Equipment Management Codes transaction formatted in a text editor:

```
ECC , CSXT0000000101 , E , TCME , S
ECC , CSXT0000000101 , E , TCMR , A
ECC , CSXT0000000101 , E , TCUR , I
```

[Exhibit 27](#) shows an Update Equipment Management Codes record formatted in Excel for the new Umler format.

**Exhibit 27. Update Equipment Management Codes record (in Excel for new Umler format)**

	A	B	C	D	E
1	ECC	CSXT0000000101	E	TCME	S
2	ECC	CSXT0000000101	E	TCMR	A
3	ECC	CSXT0000000101	E	TCUR	I

**Note:** Columns with leading zeros (C), must be formatted as text. See [Specifying Text Formatting in Excel](#) on page 4.

You can use the older style of CSV to Update Equipment Management Codes. Here is the general CSV format to update transportation codes through bulk upload:

```
"TRAN" , "ECC" , "0001" , "Equipment_ID" , "TCUR" , "Code_Value" , "TCME" ,
"Code_Value" , "TCMR" , "Code_Value"
```

Here is an example of an Update Equipment Management Codes transaction formatted in a text editor:

```
"TRAN" , "ECC" , "0001" , "CSXT0000000101" , "TCME" , "S" , "TCMR" , "A"
```

[Exhibit 28](#) shows an Update Equipment Management Codes record formatted in Excel:

**Exhibit 28. Update Equipment Management Codes Transaction (in Excel)**

	A	B	C	D	E	F	G	H
1	TRAN	ECC	0001	CSXT0000000101	TCME	S	TCMR	A

**Note:** Columns with leading zeros (C), must be formatted as text. See [Specifying Text Formatting in Excel](#) on page 4.

## Report Car Grade Inspection

This section describes the general CSV format to report car grade inspections in bulk upload format.

[Exhibit 29](#) shows valid elements for reporting car grade inspection.

### *Exhibit 29. Report Car Grade Inspection Elements*

Element ID	Description	Optional/Required
<b>CG01</b>	Car Grade	R
<b>CG02</b>	Inspection Date (in CCYYMMDD format)	R
<b>CG03</b>	Inspection Time (in HHMM format)	R
<b>CG04</b>	Location SPLC	R
<b>CG05</b>	Inspecting SCAC	R

Here is an example of a Report Car Grade Inspection formatted in a text editor:

```
ECC,CSXT0000000101,E,CG01,A
ECC,CSXT0000000101,E,CG02,20030214
ECC,CSXT0000000101,E,CG03,1300
ECC,CSXT0000000101,E,CG04,411657
ECC,CSXT0000000101,E,CG05,TTX
```

[Exhibit 30](#) shows a Report Car Grade Inspection record in Excel in the new Umler format.

### *Exhibit 30. Report Car Grade Inspection (in Excel for new Umler format)*

	A	B	C	D	E
1	CGI	RAIL 151841 E	CG01	Z	
2	CGI	RAIL 151841 E	CG02	20100201	
3	CGI	RAIL 151841 E	CG03	1201	
4	CGI	RAIL 151841 E	CG04	66820000	
5	CGI	RAIL 151841 E	CG05	RAIL	
6					

**Note:** Columns with leading zeros (C), must be formatted as text. See [Specifying Text Formatting in Excel](#) on page 4.

In the new Umler format, when initially adding the CGI to a car, all the elements must be included. However, if the CGI data exists in the record, it is not necessary to include all of the elements of the CGI record if just updating a single element.

You can use the older style of CSV to Report Car Grade Inspections. Here is the general CSV format to report car grade inspection through bulk upload:

```
"TRAN", "CGI", "0001", "Equipment_ID", "CG01", "Car_Grade_Code", "CG02",
"Inspection_Date", "CG03", "Inspection_Time", "CG04", "SPLC", "CG05",
"Inspecting_SCAC"
```

Here is an example of a Report Car Grade Inspection formatted in a text editor:

```
"TRAN", "CGI", "0001", "CSXT0000000101", "CG01", "A", "CG02", "20030214",
"CG03", "130000", "CG04", "411657", "CG05", "TTX"
```

[Exhibit 31](#) shows a Report Car Grade Inspection record formatted in Excel:

**Exhibit 31. Report Car Grade Inspection (in Excel)**

	A	B	C	D	E	F	G	H	I	J	K	L	M	N
1	TRAN	CGI	0001	CSXT0000000101	CG01	A	CG02	20030214	CG03	130000	CG04	411657	CG05	TTX

**Note:** Columns with leading zeros (C), must be formatted as text. See [Specifying Text Formatting in Excel](#) on page 4.

## Update Equipment Maintenance Party

This section describes the general CSV format to update the equipment maintenance party through bulk upload format.

[Exhibit 32](#) shows valid elements for Updating Equipment Maintenance Party.

### *Exhibit 32. Updating Equipment Maintenance Party Elements*

Element ID	Description	Optional/Required
MNPT	Equipment Maintenance Party	R

Here is an example of an Update Equipment Maintenance Party record formatted in the text editor, in the new Umler format:

```
ECC, CSXT0000000101, MNPT, UP
```

[Exhibit 33](#) shows an Update Equipment Maintenance Party record formatted in Excel in the new Umler format.

### *Exhibit 33. Update Equipment Maintenance Party (in Excel for new Umler format)*

	A	B	C	D	E
1	ECC	RAIL 151841	E	MNPT	UP

**Note:** Columns with leading zeros (C), must be formatted as text. See [Specifying Text Formatting in Excel](#) on page 4.

You can use the older style of CSV to Update Equipment Maintenance Party. Here is the general CSV format to update equipment maintenance party through bulk upload:

```
"TRAN", "ECC", "0001", "Equipment_ID", "MNPT", "Mark"
```

Here is an example of an Update Equipment Maintenance Party record formatted in a text editor:

```
"TRAN", "ECC", "0001", "CSXT0000000101", "MNPT", "UP"
```

[Exhibit 34](#) shows an Update Equipment Maintenance Party record formatted in Excel:

### *Exhibit 34. Update Equipment Maintenance Party (in Excel)*

	A	B	C	D	E	F
1	TRAN	ECC	0001	CSXT0000000101	MNPT	CN

**Note:** Columns with leading zeros (C), must be formatted as text. See [Specifying Text Formatting in Excel](#) on page 4.



## Report Air Brake Test Inspection

This section describes the general CSV format to report an air brake test inspection through bulk upload.

[Exhibit 35](#) shows valid elements for reporting air brake inspection:

**Exhibit 35. Report Air Brake Test Inspection Elements**

Element ID	Description	Optional/Required
0001	The equipment ID of the car to which the ABT inspection pertains.	R*
REPT	Inspection reporter	R
PERF	Inspection performer	R
SPLC	Location SPLC	R
DTDN	Date done (in CCYYMMDD format).	R

Here is an example of an Air Brake Test Inspection record formatted in a text editor. The following transaction reports an Air Brake Test Inspection done for car ABCD 123456, reported by EFGH and performed by XYZ on 02/14/2004 in Cary, NC (SPLC 411657):

```
ABT,ABCD0000123456,E,REPT,EFGH
ABT,ABCD0000123456,E,PERF,XYZ
ABT,ABCD0000123456,E,SPLC,411657
ABT,ABCD0000123456,E,DTDN,20040214
```

[Exhibit 36](#) shows an Air Brake Test Inspection Record in Excel in the new Umler format.

**Exhibit 36. Report Air Brake Test Inspection (in Excel for new Umler format)**

	A	B	C	D	E
1	ECC	ABCD0000123456	E	REPT	EFGH
2	ECC	ABCD0000123456	E	PERF	XYZ
3	ECC	ABCD0000123456	E	SPLC	411657
4	ECC	ABCD0000123456	E	DTDN	20040214

**Note:** Columns with leading zeros (C), must be formatted as text. See [Specifying Text Formatting in Excel](#) on page 4.

You can use the older style of CSV to Report Air Brake Test Inspections. Here is the general CSV format to report an air brake test inspection through bulk upload:

```
"TRAN","ABT","0001","Equipment_ID","REPT","Inspection_Reporter",
"PERF","Inspection_Performer","SPLC","Location_SPLC","DTDN",
"Date_Done"
```

Here is an example of an Air Brake Test Inspection record formatted in a text editor. The following transaction reports an Air Brake Test Inspection for car ABCD 123456, reported by EFGH and performed by XYZ on 02/14/2004 in Cary, NC (SPLC 411657):

```
"TRAN","ABT","0001","ABCD0000123456","REPT","EFGH","PERF","XYZ",
"SPLC","411657","DTDN","20040214"
```

[Exhibit 37](#) shows an Air Brake Test Inspection record formatted in Excel:

**Exhibit 37. Air Brake Test Inspection (in Excel)**

	A	B	C	D	E	F	G	H	I	J	K	L
1	TRAN	ABT	0001	ABCD0000123456	REPT	EFGH	PERF	XYZ	SPLC	411657	DTDN	20040214

**Note:** Columns with leading zeros (C), must be formatted as text. See [Specifying Text Formatting in Excel](#) on page 4.

## Report Door Lube Inspection

This section describes the general CSV format to report a door lube inspection through bulk upload format.

[Exhibit 38](#) shows valid elements for reporting a door lube inspection.

### Exhibit 38. Report Door Lube Inspection Elements

Element ID	Description	Optional/Required
0001	The equipment ID of the car to which the Door Lube Inspection pertains.	R
REPT	Inspection reporter	R
PERF	Inspection performer	R
SPLC	Location SPLC	R
DTDN	Date done (in CCYYMMDD format).	R

Here is an example of a Door Lube Inspection record formatted in a text editor. The following transaction reports a Door Lube Inspection for car ABCD 123456, reported by EFGH and performed by XYZ on 02/14/2004 in Cary, NC (SPLC 411657):

```
DLI , ABCD0000123456 , E , REPT , EFGH
DLI , ABCD0000123456 , E , PERF , XYZ
DLI , ABCD0000123456 , E , SPLC , 411657
DLI , ABCD0000123456 , E , DTDN , 20040214
```

[Exhibit 39](#) shows Door Lube Inspection record in Excel.

### Exhibit 39. Door Lube Inspection (in Excel for new Umler format)

	A	B	C	D	E
1	DLI	ABCD0000123456	E	REPT	EFGH
2	DLI	ABCD0000123456	E	PERF	XYZ
3	DLI	ABCD0000123456	E	SPLC	411657
4	DLI	ABCD0000123456	E	DTDN	20040214

**Note:** Columns with leading zeros (C), must be formatted as text. See [Specifying Text Formatting in Excel](#) on page 4.

You can use the older style of CSV to Report Door Lube Inspections. Here is the general CSV format to report a door lube inspection through bulk upload:

```
"TRAN" , "DLI" , "0001" , "Equipment_ID" , "REPT" , "Inspection_Reporter" ,
"PERF" , "Inspection_Performer" , "SPLC" , "Location_SPLC" , "DTDN" ,
"Date_Done"
```

Here is an example of a Door Lube Inspection record formatted in a text editor. The following transaction reports a Door Lube Inspection for car ABCD 123456, reported by EFGH and performed by XYZ on 02/14/2004 in Cary, NC (SPLC 411657):

```
"TRAN" , "DLI" , "0001" , "ABCD0000123456" , "REPT" , "EFGH" , "PERF" , "XYZ" ,
"SPLC" , "411657" , "DTDN" , "20040214"
```

[Exhibit 40](#) shows a Door Lube Inspection record formatted in Excel:

**Exhibit 40. Door Lube Inspection (in Excel)**

	A	B	C	D	E	F	G	H	I	J	K	L
1	TRAN	DLI	0001	ABCD0000123456	REPT	EFGH	PERF	XYZ	SPLC	411657	DTDN	20040214

---

**Note:** Columns with leading zeros (C), must be formatted as text. See [Specifying Text Formatting in Excel](#) on page 4.

---

## Report Autorack Activity

This section describes the general CSV format to report autorack activity in bulk upload format.

[Exhibit 41](#) shows valid elements for reporting autorack activity.

### Exhibit 41. Report Autorack Activity Elements

Element ID	Description	Optional/Required
0001	The equipment ID of the car to which the Autorack Activity pertains.	R**
REPT	Inspection reporter	R
PERF	Inspection performer	R
SPLC	Location SPLC	R
DTDN	Date done (in CCYYMMDD format).	R
INID	Inspector ID	R*
EXRS	Exterior Roof Sheets	R*
EXSS	Exterior Side Screens	R*
INSI	Interior Side Posts	R*
TPDS	Top Deck Surface	R*
UNOD	Underside of Deck	R*
EXSP	Exterior Shear Panel	R*
INSP	Interior Shear Panel	R*
EXDR	Exterior Door	R*
INDR	Interior Door	R*

\*This element is required for Autorack Inspections (Activity Type 970A) only.

\*\* Required only for Legacy Umler

Here is an example of an Autorack Activity record formatted in a text editor. The following transaction reports an Autorack Repair (Activity Type 992) for car ABCD 123456, reported by EFGH and performed by XYZ on 02/14/2004 in Cary, NC (SPLC 411657):

```
ARR, ABCD0000123456, E, REPT, EFGH
ARR, ABCD0000123456, E, PERF, XYZ
ARR, ABCD0000123456, E, SPLC, 411657
ARR, ABCD0000123456, E, DTDN, 20040214
```

[Exhibit 42](#) shows an Autorack Activity record in Excel.

### Exhibit 42. Autorack Activity Record in Excel format

	A	B	C	D	E
1	ARR	ABCD0000123456	E	REPT	EFGH
2	ARR	ABCD0000123456	E	PERF	XYZ
3	ARR	ABCD0000123456	E	SPLC	411657
4	ARR	ABCD0000123456	E	DTDN	20040214

**Note:** Columns with leading zeros (C), must be formatted as text. See [Specifying Text Formatting in Excel](#) on page 4.

You can use the older style of CSV to Report Autorack Activity. Here is the general CSV format to report autorack activity through bulk upload:

```
"TRAN", "ARR", "0001", "Equipment_ID", "REPT", "Inspection_Reporter",
"PERF", "Inspection_Performer", "SPLC", "Location_SPLC", "DTDN",
"Date_Done"
```

Here is an example of an Autorack Activity record formatted in a text editor. The following transaction reports an Autorack Repair (Activity Type 992) for car ABCD 123456, reported by EFGH and performed by XYZ on 02/14/2004 in Cary, NC (SPLC 411657):

```
"TRAN", "ARR", "0001", "ABCD0000123456", "REPT", "EFGH", "PERF", "XYZ",
"SPLC", "411657", "DTDN", "20040214"
```

[Exhibit 43](#) shows an Autorack Activity record formatted in Excel:

**Exhibit 43. Report Autorack Activity (in Excel)**

	A	B	C	D	E	F	G	H	I	J	K	L
1	TRAN	ARR	0001	ABCD0000123456	REPT	EFGH	PERF	XYZ	SPLC	411657	DTDN	20040214

**Note:** Columns with leading zeros (C), must be formatted as text. See [Specifying Text Formatting in Excel](#) on page 4.

## Report Vehicular Flat Car Certification

This section describes the general CSV format to report a vehicular flat car certification in bulk upload format.

[Exhibit 44](#) shows valid elements for reporting a vehicular flat car certification.

### Exhibit 44. Vehicular Flat Car Certification Elements

Element ID	Description	Optional/Required
0001	The equipment ID of the car to which the Vehicular Flat Car Certification pertains.	R*
REPT	Inspection reporter	R
PERF	Inspection performer	R
SPLC	Location SPLC	R
DTDN	Date done (in CCYYMMDD format).	R

\* Required only for Legacy Umler

Here is an example of a Vehicular Flat Car Certification record formatted in a text editor. The following transaction reports a Vehicular Flat Car Certification for car ABCD 123456, reported by EFGH and performed by XYZ on 02/14/2004 in Cary, NC (SPLC 411657) in the new Umler format:

```
VFC , ABCD0000123456 , E , REPT , EFGH
VFC , ABCD0000123456 , E , PERF , XYZ
VFC , ABCD0000123456 , E , SPLC , 411657
VFC , ABCD0000123456 , E , DTDN , 20040214
```

[Exhibit 45](#) shows a Vehicular Flat Car Certification record formatted in Excel.

### Exhibit 45. Vehicular Flat Car Certification Record in Excel format

	A	B	C	D	E
1	VFC	ABCD0000123456	E	REPT	EFGH
2	VFC	ABCD0000123456	E	PERF	XYZ
3	VFC	ABCD0000123456	E	SPLC	411657
4	VFC	ABCD0000123456	E	DTDN	20040214

**Note:** Columns with leading zeros (C), must be formatted as text. See [Specifying Text Formatting in Excel](#) on page 4.

You can use the older style of CSV to Report Vehicular Flat Car Certification. Here is the general CSV format to report a vehicular flat car certification through bulk upload:

```
"TRAN" , "VFC" , "0001" , "Equipment_ID" , "REPT" , "Inspection_Reporter" ,
"PERF" , "Inspection_Performer" , "SPLC" , "Location_SPLC" , "DTDN" ,
"Date_Done"
```

Here is an example of a Vehicular Flat Car Certification record formatted in a text editor. The following transaction reports a Vehicular Flat Car Certification for car ABCD 123456, reported by EFGH and performed by XYZ on 02/14/2004 in Cary, NC (SPLC 411657):

```
"TRAN" , "VFC" , "0001" , "ABCD0000123456" , "REPT" , "EFGH" , "PERF" , "XYZ" ,  
"SPLC" , "411657" , "DTDN" , "20040214"
```

[Exhibit 46](#) shows a Vehicular Flat Car Certification record formatted in Excel:

**Exhibit 46. Vehicular Flat Car Certification (in Excel)**

	A	B	C	D	E	F	G	H	I	J	K	L
1	TRAN	VFC	0001	ABCD0000123456	REPT	EFGH	PERF	XYZ	SPLC	411657	DTDN	20040214

**Note:** Columns with leading zeros (C), must be formatted as text. See [Specifying Text Formatting in Excel](#) on page 4.



## Report FRA Locomotive Inspection

This section describes the general CSV format to report an FRA Locomotive Inspection in bulk upload format.

[Exhibit 47](#) shows valid elements for reporting an FRA Locomotive Inspection.

### Exhibit 47. FRA Locomotive Inspection Elements

Element ID	Description	Optional/Required
0001	The equipment ID of the car to which the FRA Locomotive Inspection pertains.	R
REPT	Inspection reporter	R
PERF	Inspection performer	R
SPLC	Location SPLC	R
DTDN	Date done (in CCYYMMDD format).	R
SCDD	Scheduled Due Date (in CCYYMMDD format)	O*
INDD	Inspection Due Date (in CCYYMMDD format)	O*

\*If the transaction does not include this element, the system assigns a default value for the transaction based on the business rules for the particular inspection type.

Here is an example of an FRA Locomotive Inspection record formatted in a text editor. The following transaction reports a 60-day Cab Signals Inspection for car ABCD 123456, reported by EFGH, performed by XYZ on 02/14/2004 in Cary, NC (SPLC 411657), with a scheduled due date of 03/31/2004, and an inspection due date of 04/12/2004:

```
FRA,ABCD0000123456,E,REPT,EFGH
FRA,ABCD0000123456,E,PERF,XYZ
FRA,ABCD0000123456,E,SPLC,411657
FRA,ABCD0000123456,E,DTDN,20040214
FRA,ABCD0000123456,E,SCDD,20040331
FRA,ABCD0000123456,E,INDD,20040412
```

[Exhibit 48](#) shows an FRA Locomotive Inspection record formatted in Excel.

### Exhibit 48. FRA Locomotive Inspection Record in Excel format

	A	B	C	D	E
1	FRA	ABCD0000123456	E	REPT	EFGH
2	FRA	ABCD0000123456	E	PERF	XYZ
3	FRA	ABCD0000123456	E	SPLC	411657
4	FRA	ABCD0000123456	E	DTDN	20040214
5	FRA	ABCD0000123456	E	SCDD	20040331
6	FRA	ABCD0000123456	E	INDD	20040412

**Note:** Columns with leading zeros (C), must be formatted as text. See [Specifying Text Formatting in Excel](#) on page 4.

You can use the older style of CSV to Report FRA Locomotive Inspection. Here is the general CSV format to report an FRA Locomotive Inspection through bulk upload:

```
"TRAN", "FRA", "0001", "Equipment_ID", "REPT", "Inspection_Reporter",
"PERF", "Inspection_Performer", "SPLC", "Location_SPLC", "DTDN",
"Date_Done", "SCDD", "Scheduled_Due_Date", "INDD", "Inspection_Due_Date"
```

Here is an example of an FRA Locomotive Inspection record formatted in a text editor. The following transaction reports a 60-day Cab Signals Inspection for car ABCD 123456, reported by EFGH, performed by XYZ on 02/14/2004 in Cary, NC (SPLC 411657), with a scheduled due date of 03/31/2004, and an inspection due date of 04/12/2004:

```
"TRAN", "CSI", "0001", "ABCD0000123456", "REPT", "EFGH", "PERF", "XYZ",
"SPLC", "411657", "DTDN", "20040214", "SCDD", "20040331", "INDD",
"20040412"
```

[Exhibit 49](#) shows an FRA Locomotive Inspection record formatted in Excel:

**Exhibit 49. FRA Locomotive Inspection (in Excel)**

	A	B	C	D	E	F	G	H	I	J	K	L	M	N	O	P
1	TRAN	CSI	0001	ABCD0000123456	REPT	EFGH	PERF	XYZ	SPLC	411657	DTDN	20040214	SCDD	20040331	INDD	20040412

**Note:** Columns with leading zeros (C), must be formatted as text. See [Specifying Text Formatting in Excel](#) on page 4.

## Report Reflectorization Event

This section describes the general CSV format to report an Reflectorization Event in bulk upload format.

[Exhibit 50](#) shows valid elements for reporting Reflectorization Events.

**Exhibit 50. Report Reflectorization Event Elements**

Element ID	Description	Optional/Required
REPT	Inspection reporter	R
PERF	Inspection performer	R
SPLC	Location SPLC	R
DTDN	Date done (in CCYYMMDD format).	R

Here is an example of a Reflectorization Event record formatted in a text editor. The following transaction reports an Reflectorization Event for car ABCD 123456, reported by EFGH and performed by XYZ on 02/14/2004 in Cary, NC (SPLC 411657):

```
REF,ABCD0000123456,E,REPT,EFGH
REF,ABCD0000123456,E,PERF,XYZ
REF,ABCD0000123456,E,SPLC,411657
REF,ABCD0000123456,E,DTDN,20040214
```

[Exhibit 51](#) shows a Reflectorization Event record formatted in Excel.

**Exhibit 51. Reflectorization Event in Excel format**

	A	B	C	D	E
1	REF	ABCD0000123456	E	REPT	EFGH
2	REF	ABCD0000123456	E	PERF	XYZ
3	REF	ABCD0000123456	E	SPLC	411657
4	REF	ABCD0000123456	E	DTDN	20040214

**Note:** Columns with leading zeros (C), must be formatted as text. See [Specifying Text Formatting in Excel](#) on page 4.

You can use the older style of CSV to Report Reflectorization Events. Here is the general CSV format to report an Reflectorization Event through bulk upload:

```
"TRAN","REF","0001","Equipment_ID","REPT","Inspection_Reporter",
"PERF","Inspection_Performer","SPLC","Location_SPLC","DTDN",
"Date_Done"
```

Here is an example of a Reflectorization Event record formatted in a text editor. The following transaction reports an Reflectorization Event for car ABCD 123456, reported by EFGH and performed by XYZ on 02/14/2004 in Cary, NC (SPLC 411657):

```
"TRAN","REF","0001","ABCD0000123456","REPT","EFGH","PERF","XYZ",
"SPLC","411657","DTDN","20040214"
```

[Exhibit 52](#) shows a Reflectorization Event record formatted in Excel:

**Exhibit 52. Reflectorization Event (in Excel)**

	A	B	C	D	E	F	G	H	I	J	K	L
1	TRAN	REF	0001	ABCD0000123456	REPT	EFGH	PERF	XYZ	SPLC	0000411657	DTDN	20040214

---

**Note:** Columns with leading zeros (C), must be formatted as text. See [Specifying Text Formatting in Excel](#) on page 4.

---

## Add Equipment

Adding equipment uses the new Umler 3.2 CSV format for defining a new piece of equipment in the Umler system. When adding a piece of equipment the user needs to be aware of all of the necessary elements that define it. All mandatory and conditionally mandatory elements must be completed in order to successfully create a new record.

Conditionally mandatory elements are those that are required for the equipment definition based on the Mechanical Designation of the equipment. An example would be a refrigerated boxcar. Certain elements for boxcars are necessary in order to successfully define the car as a refrigerated car. Likewise, the user cannot define elements that would not be found in such a car. The Umler business rules enforces the inclusion/exclusion of selected, non-mandatory, elements based on the Mechanical Designation.

---

**Note:** Refer to the Umler Data Specification manual for a listing, for each equipment type, of all mandatory elements for a particular piece of equipment. Additionally, all of the elements that are needed, when adding, that are used for ETC generation. All of the elements along with the Conditionally mandatory elements are needed for a successful CSV upload to occur.

---

The new CSV format takes into account the new Component structure information that is now available in the Umler system. These structures could not be defined in the 3.1 format and require a unique way of representing the information. The new format also takes into account the new 14 character Equipment ID being used in Umler 3.2 and all subsequent versions.

The 3.2 format deviates from the current format in that each column in the form has very specific functions as described in [Exhibit 1](#).

### Example (Add Equipment)

Adding a piece of equipment, HOPP, to the Umler system, ETC=K384. The Transaction Type will be 'ECA' and the Action Code will be 'E'. Note that multiple adds can be joined together as long as all the elements for a particular piece of equipment are kept together. Although there is no particular order that the user must follow when designing a CSV file, it is recommended for clarity to follow the layout that shown in the Umler application.

Here is an example of an Add equipment record in the new Umler format:

```
ECA,RAIL 101,E,0002,HOPP,,
ECA,RAIL 101,E,USCD,P,,
ECA,RAIL 101,E,UMMD,HMA,,
ECA,RAIL 101,E,BLDT,19920101,,
ECA,RAIL 101,E,UMOW,AAR,,
ECA,RAIL 101,E,A184,65000,,
ECA,RAIL 101,E,A150,65000,,
ECA,RAIL 101,E,A096,E,,
ECA,RAIL 101,E,B174,N,,
ECA,RAIL 101,E,A266,263000,,
ECA,RAIL 101,E,A259,58000,,
ECA,RAIL 101,E,LDLT,205000,,
ECA,RAIL 101,E,A289,E,,
ECA,RAIL 101,E,A067,1600,,
ECA,RAIL 101,E,A046,B,,
```

ECA,RAIL 101,E,OSLG,420,,  
ECA,RAIL 101,E,A186,128,,  
ECA,RAIL 101,E,A185,145,,  
ECA,RAIL 101,E,A187,139,,  
ECA,RAIL 101,E,A194,128,,  
ECA,RAIL 101,E,A193,138,,  
ECA,RAIL 101,E,A276,269,,  
ECA,RAIL 101,E,A024,4,,  
ECA,RAIL 101,E,B191,R,,  
ECA,RAIL 101,E,B026,H,,  
ECA,RAIL 101,E,A146,SC,,  
ECA,RAIL 101,E,B006,Y,,  
ECA,RAIL 101,E,B142,4,,  
ECA,RAIL 101,E,A158,28,,  
ECA,RAIL 101,E,A030,19,,  
ECA,RAIL 101,A,, ,TRUCKSYS,A  
ECA,RAIL 101,A,TRUCKSYS,A,TRUCK,A  
ECA,RAIL 101,A,TRUCKSYS,A,AXLESPACE,02  
ECA,RAIL 101,E,B252,2,TRUCK,A  
ECA,RAIL 101,E,A147,F,TRUCK,A  
ECA,RAIL 101,E,A294,36,TRUCK,A  
ECA,RAIL 101,E,B020,70,AXLESPACE,02  
ECA,RAIL 101,A,, ,TRUCKSYS,B  
ECA,RAIL 101,A,TRUCKSYS,B,TRUCK,B  
ECA,RAIL 101,A,TRUCKSYS,B,AXLESPACE,01  
ECA,RAIL 101,E,B252,2,TRUCK,B  
ECA,RAIL 101,E,A147,F,TRUCK,B  
ECA,RAIL 101,E,A294,36,TRUCK,B  
ECA,RAIL 101,E,B020,70,AXLESPACE,01  
ECA,RAIL 101,A,, ,DRAFTSYS,A  
ECA,RAIL 101,A,, ,DRAFTSYS,B  
ECA,RAIL 101,E,A057,F70CE,DRAFTSYS,A  
ECA,RAIL 101,E,B058,B,DRAFTSYS,A  
ECA,RAIL 101,E,B073,S,DRAFTSYS,A  
ECA,RAIL 101,E,A057,F70CE,DRAFTSYS,B  
ECA,RAIL 101,E,B058,B,DRAFTSYS,B  
ECA,RAIL 101,E,B073,S,DRAFTSYS,B

## Add Equipment—Multiple Unit Car

Articulated/Drawbar equipment adds require additional information at the component level when adding the element information. The user needs to add elements for the Truck systems and the Unit Segment information on each unit.

The following demonstrates a 6-unit articulated IFLT.

---

**Note:** The individual Tare and Load Limits for each unit must match the total Tare and Load Limit values. The Connected Unit count (A020) must match the number of units described in the UnitSeg section.

---

Units structure, as well as the arrangement of Truck Systems always follows the same convention. The ‘B’ unit is on the brake end and back end is the ‘A’ unit. As is shown here in a multi-segment unit the convention would be as follows: ‘B, C, D, E, F, A’.

Here is an example CSV format to add multiple unit equipment through bulk upload in the new Umler format:

### Example (Add Articulated Unit)

```
ECA,RAIL 919053,E,0002,IFLT,,
ECA,RAIL 919053,E,USCD,P,,
ECA,RAIL 919053,E,UMMD,FCA,,
ECA,RAIL 919053,E,B341,FCLA,,
ECA,RAIL 919053,E,BLDT,20090302,,
ECA,RAIL 919053,E,UMOW,RAIL,,
ECA,RAIL 919053,E,A184,75000,,
ECA,RAIL 919053,E,A150,75000,,
ECA,RAIL 919053,E,A096,E,,
ECA,RAIL 919053,E,MNPT,RAIL,,
ECA,RAIL 919053,E,A020,6,,
ECA,RAIL 919053,E,A024,12,,
ECA,RAIL 919053,E,A104,19,,
ECA,RAIL 919053,E,A135,576,,
ECA,RAIL 919053,E,A138,102,,
ECA,RAIL 919053,E,A146,SC,,
ECA,RAIL 919053,E,A182,3,,
ECA,RAIL 919053,E,A266,798800,,
ECA,RAIL 919053,E,A259,162800,,
ECA,RAIL 919053,E,LDLT,636000,,
ECA,RAIL 919053,E,A289,E,,
ECA,RAIL 919053,E,A046,B,,
ECA,RAIL 919053,E,OSLG,3175,,
ECA,RAIL 919053,E,A186,116,,
ECA,RAIL 919053,E,A185,71,,
ECA,RAIL 919053,E,A187,56,,
ECA,RAIL 919053,E,A192,32,,
ECA,RAIL 919053,E,A247,S,,
ECA,RAIL 919053,E,A276,618,,
ECA,RAIL 919053,E,B026,H,,
ECA,RAIL 919053,E,B075,Y,,
ECA,RAIL 919053,E,B115,A,,
ECA,RAIL 919053,E,B174,N,,
```

ECA,RAIL 919053,E,B189,Y,,  
ECA,RAIL 919053,E,B191,R,,  
ECA,RAIL 919053,E,B283,3,,  
ECA,RAIL 919053,E,B287,TC,,  
ECA,RAIL 919053,E,B288,QB1,,  
ECA,RAIL 919053,A,,,DRAFTSYS,A  
ECA,RAIL 919053,E,A057,SBE60CE,DRAFTSYS,A  
ECA,RAIL 919053,E,B058,P,DRAFTSYS,A  
ECA,RAIL 919053,E,B073,S,DRAFTSYS,A  
ECA,RAIL 919053,A,,,DRAFTSYS,B  
ECA,RAIL 919053,E,A057,SBE60CE,DRAFTSYS,B  
ECA,RAIL 919053,E,B058,P,DRAFTSYS,B  
ECA,RAIL 919053,E,B073,S,DRAFTSYS,B  
ECA,RAIL 919053,A,,,TRUCKSYS,B  
ECA,RAIL 919053,A,,,TRUCKSYS,F  
ECA,RAIL 919053,A,,,TRUCKSYS,E  
ECA,RAIL 919053,A,,,TRUCKSYS,D  
ECA,RAIL 919053,A,,,TRUCKSYS,C  
ECA,RAIL 919053,A,,,TRUCKSYS,A  
ECA,RAIL 919053,A,,,UNITSEG,A  
ECA,RAIL 919053,E,A054,2,UNITSEG,A  
ECA,RAIL 919053,E,A272,1,UNITSEG,A  
ECA,RAIL 919053,E,A299,31600,UNITSEG,A  
ECA,RAIL 919053,E,A300,106000,UNITSEG,A  
ECA,RAIL 919053,E,A301,576,UNITSEG,A  
ECA,RAIL 919053,E,A307,IFLT,UNITSEG,A  
ECA,RAIL 919053,A,,,UNITSEG,B  
ECA,RAIL 919053,E,A054,2,UNITSEG,B  
ECA,RAIL 919053,E,A272,1,UNITSEG,B  
ECA,RAIL 919053,E,A299,31600,UNITSEG,B  
ECA,RAIL 919053,E,A300,106000,UNITSEG,B  
ECA,RAIL 919053,E,A301,576,UNITSEG,B  
ECA,RAIL 919053,E,A307,IFLT,UNITSEG,B  
ECA,RAIL 919053,A,,,UNITSEG,C  
ECA,RAIL 919053,E,A054,1,UNITSEG,C  
ECA,RAIL 919053,E,A272,1,UNITSEG,C  
ECA,RAIL 919053,E,A299,24900,UNITSEG,C  
ECA,RAIL 919053,E,A300,10600,UNITSEG,C  
ECA,RAIL 919053,E,A301,576,UNITSEG,C  
ECA,RAIL 919053,E,A307,IFLT,UNITSEG,C  
ECA,RAIL 919053,A,,,UNITSEG,D  
ECA,RAIL 919053,E,A054,1,UNITSEG,D  
ECA,RAIL 919053,E,A272,1,UNITSEG,D  
ECA,RAIL 919053,E,A299,24900,UNITSEG,D  
ECA,RAIL 919053,E,A300,10600,UNITSEG,D  
ECA,RAIL 919053,E,A301,576,UNITSEG,D  
ECA,RAIL 919053,E,A307,IFLT,UNITSEG,D  
ECA,RAIL 919053,A,,,UNITSEG,E  
ECA,RAIL 919053,E,A054,1,UNITSEG,E  
ECA,RAIL 919053,E,A272,1,UNITSEG,E  
ECA,RAIL 919053,E,A299,24900,UNITSEG,E  
ECA,RAIL 919053,E,A300,10600,UNITSEG,E  
ECA,RAIL 919053,E,A301,576,UNITSEG,E  
ECA,RAIL 919053,E,A307,IFLT,UNITSEG,E  
ECA,RAIL 919053,A,,,UNITSEG,F  
ECA,RAIL 919053,E,A054,1,UNITSEG,F  
ECA,RAIL 919053,E,A272,1,UNITSEG,F



ECA,RAIL 919053,E,A299,24900,UNITSEG,F  
ECA,RAIL 919053,E,A300,10600,UNITSEG,F  
ECA,RAIL 919053,E,A301,576,UNITSEG,F  
ECA,RAIL 919053,E,A307,IFLT,UNITSEG,F  
ECA,RAIL 919053,A,TRUCKSYS,B,AXLESPACE,01  
ECA,RAIL 919053,E,B020,70,AXLESPACE,01  
ECA,RAIL 919053,A,TRUCKSYS,B,TRUCK,B  
ECA,RAIL 919053,E,B252,2,TRUCK,B  
ECA,RAIL 919053,E,A147,E,TRUCK,B  
ECA,RAIL 919053,E,A294,33,TRUCK,B  
ECA,RAIL 919053,E,B199,Y,TRUCK,B  
ECA,RAIL 919053,A,TRUCKSYS,C,AXLESPACE,02  
ECA,RAIL 919053,E,B020,70,AXLESPACE,02  
ECA,RAIL 919053,A,TRUCKSYS,C,TRUCK,C  
ECA,RAIL 919053,E,B252,2,TRUCK,C  
ECA,RAIL 919053,E,A147,F,TRUCK,C  
ECA,RAIL 919053,E,A294,36,TRUCK,C  
ECA,RAIL 919053,E,B199,Y,TRUCK,C  
ECA,RAIL 919053,A,TRUCKSYS,D,AXLESPACE,03  
ECA,RAIL 919053,E,B020,70,AXLESPACE,03  
ECA,RAIL 919053,A,TRUCKSYS,D,TRUCK,D  
ECA,RAIL 919053,E,B252,2,TRUCK,D  
ECA,RAIL 919053,E,A147,F,TRUCK,D  
ECA,RAIL 919053,E,A294,36,TRUCK,D  
ECA,RAIL 919053,E,B199,Y,TRUCK,D  
ECA,RAIL 919053,A,TRUCKSYS,E,AXLESPACE,04  
ECA,RAIL 919053,E,B020,70,AXLESPACE,04  
ECA,RAIL 919053,A,TRUCKSYS,E,TRUCK,E  
ECA,RAIL 919053,E,B252,2,TRUCK,E  
ECA,RAIL 919053,E,A147,F,TRUCK,E  
ECA,RAIL 919053,E,A294,36,TRUCK,E  
ECA,RAIL 919053,E,B199,Y,TRUCK,E  
ECA,RAIL 919053,A,TRUCKSYS,F,AXLESPACE,05  
ECA,RAIL 919053,E,B020,68,AXLESPACE,05  
ECA,RAIL 919053,A,TRUCKSYS,F,TRUCK,F  
ECA,RAIL 919053,E,B252,2,TRUCK,F  
ECA,RAIL 919053,E,A147,E,TRUCK,F  
ECA,RAIL 919053,E,A294,33,TRUCK,F  
ECA,RAIL 919053,E,B199,Y,TRUCK,F  
ECA,RAIL 919053,A,TRUCKSYS,A,AXLESPACE,06  
ECA,RAIL 919053,E,B020,70,AXLESPACE,06  
ECA,RAIL 919053,A,TRUCKSYS,A,TRUCK,A  
ECA,RAIL 919053,E,B252,2,TRUCK,A  
ECA,RAIL 919053,E,A147,E,TRUCK,A  
ECA,RAIL 919053,E,A294,33,TRUCK,A  
ECA,RAIL 919053,E,B199,Y,TRUCK,A

## Modify Equipment

The user can modify individual elements within a piece of previously defined equipment. It is only necessary to modify the element that is being changed. However, if that element has business rules that link it to other elements, the user must take care to see that the changes adhere to the rules or the equipment will end up in Conflict.

For element changes the Transaction Type is 'ECC' and the Action Code is 'E'.

### Example—Remove Lessee from a Piece of Equipment

Here is an example CSV format to remove lessee through bulk upload in the new Umler format:

```
ECC, RAIL 102, E, LESE,
```

---

**Note:** Since the LESE field will be blank the Element Value section should have no data in it.

---

### Example—Change Weighing Status from Estimated to Actual

```
ECC,RAIL 103,E,A289,A  
ECC,RAIL 103,E,A288,20100201
```

---

**Note:** When the Weighing Status is changed from Estimated to Actual, the Weigh Date must be provided.

---

### Example—Update Equipment Maintenance Party

```
ECC, RAIL 103,E,MNPT,CN
```

## Delete an Element from a Record

Working the same as the Trashcan icon in the Umler application, data specific to an element can be removed from the record.

### Rules for Deleting Elements from an Equipment Record

1. Mandatory elements cannot be deleted
2. A System-Generated element cannot be deleted
3. It cannot be an inspection element
4. If there is no value present in the field, it cannot be deleted

---

**Note:** In looking an Modify Single/Multiple Equipment, those elements that can be deleted, should have a trashcan icon to the left of the data field.

---

For element removals, the Transaction Type is 'ECC' and the Action Code is 'R'.

For example, the following transaction deletes element A146 (CC Side Bearing Type ) from equipment ID RAIL 103:

```
ECC,RAIL 103,R,A146,
```

[Exhibit 53](#) shows a delete element function, formatted in Excel in the new Umler format.

**Exhibit 53. Delete Element (in Excel format in new Umler format)**

	A	B	C	D	E
1	ECC	RAIL 103	R	A146	

To delete an element on a component system the following structure would be used:

```
ECC,Equipment ID,R,Element ID,Parent Component Location,Target  
Component ID, Target Component Location ID
```

For example, the following transaction deletes element A057 (Coupler Code – A) from the DRAFTSYS section:

```
ECC,RAIL 103,R,A057,,DRAFTSYS,A
```

[Exhibit 54](#) shows an delete element A057 from the DRAFTSYST component A formatted in Excel in the new Umler format.

**Exhibit 54. Delete Element A057 (in Excel format in new Umler format)**

	A	B	C	D	E	F	G
1	ECC	RAIL 103	R	A057		DRAFTSYS	A

## Delete a Component from a Record

The user can delete specific components from the record of previously defined equipment. It is important to note that if you delete a component you must at the same time redefine a component, especially if there are mandatory elements in that particular component.

For component changes the Transaction Type is ‘ECC’ and the Action Code is ‘E’.

Here is the general CSV format to delete the Unit Seg component structure through the bulk upload in the new Umler format:

```
ECC, Equipment ID, D, , , UNITSEG
```

---

**Note:** Now that the Unitseg has been deleted, if it is defined for a car, i.e. A020 (Connected Unit Count) is not blank or 1, then a new Unitseg must be defined:

---

```
ECC, Equipment ID, A, , , UNITSEG, B
```

The scenario for this is an articulated car that is being broken up into single units. Prior to the deletion, the car could have had X number of units. When it was redefined as UNITSEG B, it is now a single unit.

This is how the entire process would look:

```
ECC, Equipment ID, D, , , UNITSEG,  
ECC, Equipment ID, A, , , UNITSEG, B
```

For example, the following deletes all of the Unitseg components for the car and then redefines a single unitseg:

```
ECC, RAIL 919053, D, , , UNITSEG,  
ECC, RAIL 919053ID, A, , , UNITSEG, B
```

---

**Note:** With the addition back of the Unitseg, any mandatory elements must be repopulated at the same time.

---

## Upload Wheelset Component Registry

**Note:** User must have Component Maintenance Access permission to perform Component Registry Uploads. See Company SSO Administrator to request permission.

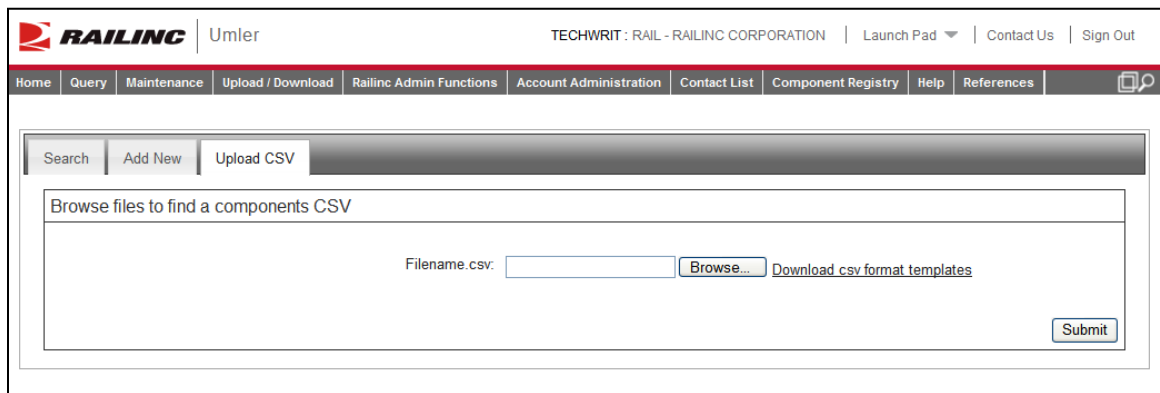
Uploads can be used to quickly submit many similar components (e.g., 100 wheelsets with no differences except serial numbers and component IDs), to correct fields throughout entire sets of components, or to delete large numbers of incorrectly or prematurely registered components. Users can upload component information from proprietary systems in an acceptable CSV format. To upload a component CSV file:

1. Log onto Umler as described in the [Umler User Guide](#). The Umler Welcome page is displayed.
2. Select **Component Registry>Registration**. The Search Component Registry tab page is displayed.

**Note:** If **Component Registry>Associate Component** is selected, a similar page is displayed (not shown).

3. Select the **Upload CSV** tab. The Browse files to find a components CSV panel is displayed ([Exhibit 55](#)).

### *Exhibit 55. Browse Files to Find a Components CSV*



The link to the right of the **Browse** button opens a template of the format expected for component uploads. It can be opened or saved ([Exhibit 56](#) for registrations and [Exhibit 57](#) for associations).

- For additional information about preparing upload files, see [Component Registry CSV Uploads](#) on page 41.
- If the CSV files has already been properly prepared, continue with [Uploading the CSV Component Registry File](#) on page 43.

# Component Registry CSV Uploads

## Registration Upload File Preparation

*Exhibit 56. CSV Wheelset Upload Template (in Excel)*

	A	B	C	D	E	F	G	H	I	J	K	L	M	N	O	P	Q												
1	TransactionType	ComponentID	ComponentType	BASE-C003	BASE-C004	BASE-C006	AXLE:1-C303	AXL	AXL	AXL	AXL	AXL	AXL	AXL	AXL	AXL	AXLE:1-C314												
2	AC	TEST12345	WHEELSET																										
3	CC	TEST67890																											
4	DC	TEST234																											
5																													
	R	S	T	U	V	W	X	Y	Z	AA	AB	AC	AD	AE	AF	AG	AH	AI	AJ	AK	AL	AM	AN	AO	AP	AQ	AR	AS	AT
1	BEARING:1-C203	BEA	BEA	BEA	BEA	BEA	BEA	BEA	BEA	BEA	BEA	BEA	BEA	BEA	BEARING:1-C216	WHEEL:1-C103	WH	WH	WH	WH	WH	WH	WH	WH	WH	WH	WH	WH	WHEEL:1-C117
2																													
3																													
4																													
5																													
	AU	AV	AW	AX	AY	AZ	BA	BB	BC	BD	BE	BF	BG	BH	BI	BJ	BK	BL	BM	BN	BO	BP	BQ	BR	BS	BT	BU	BV	BW
1	BEARING:2-C203	BEA	BEA	BEA	BEA	BEA	BEA	BEA	BEA	BEA	BEA	BEA	BEA	BEA	BEARING:2-C216	WHEEL:2-C103	WH	WH	WH	WH	WH	WH	WH	WH	WH	WH	WH	WH	WHEEL:2-C117
2																													
3																													
4																													
5																													

The fields are as described in the online Element Help and in the *Umler Component Registry Data Specification Manual* accessed through Umler References. The Transaction Type indicates what action the user wants done for each row of information entered:

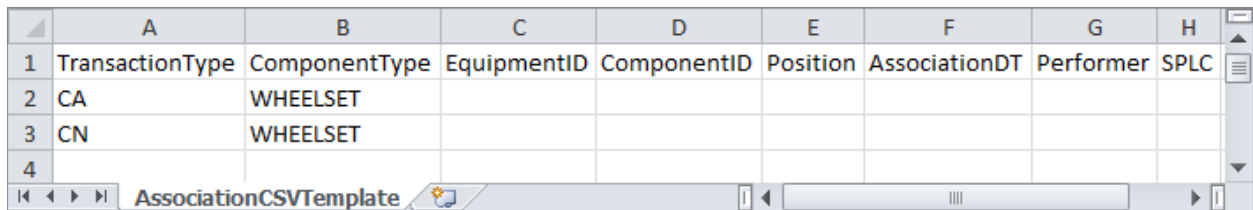
- AC** = Add Component
- CC** = Change Component
- DC** = Delete Component

- Notes:**
- A single upload file can contain all three types of transactions.
  - Large text entries should not contain commas (which are interpreted as field delimiters). Use dashes or other keyable characters.
  - Changes require a Component ID and only those fields with changes (other fields are left untouched).
  - Deletions require a Component ID only.
  - Adds must contain all mandatory fields.
  - For more information, see [Umler Bulk Upload Transactions CSV File Specifications](#). Also available through Umler References.

When all file preparation is complete, continue with [Uploading the CSV Component Registry File](#) on page 43.

## Association Upload File Preparation

*Exhibit 57. Association CSV Upload Template (in Excel)*



	A	B	C	D	E	F	G	H
1	TransactionType	ComponentType	EquipmentID	ComponentID	Position	AssociationDT	Performer	SPLC
2	CA	WHEELSET						
3	CN	WHEELSET						
4								

The fields are as described in the online Element Help and in the *Umler Component Registry Data Specification Manual* accessed through Umler References. The Transaction Type indicates what action the user wants done for each row of information entered:

**For component associations:**

**CA** = Associate Component

**CN** = Nullify Component Association

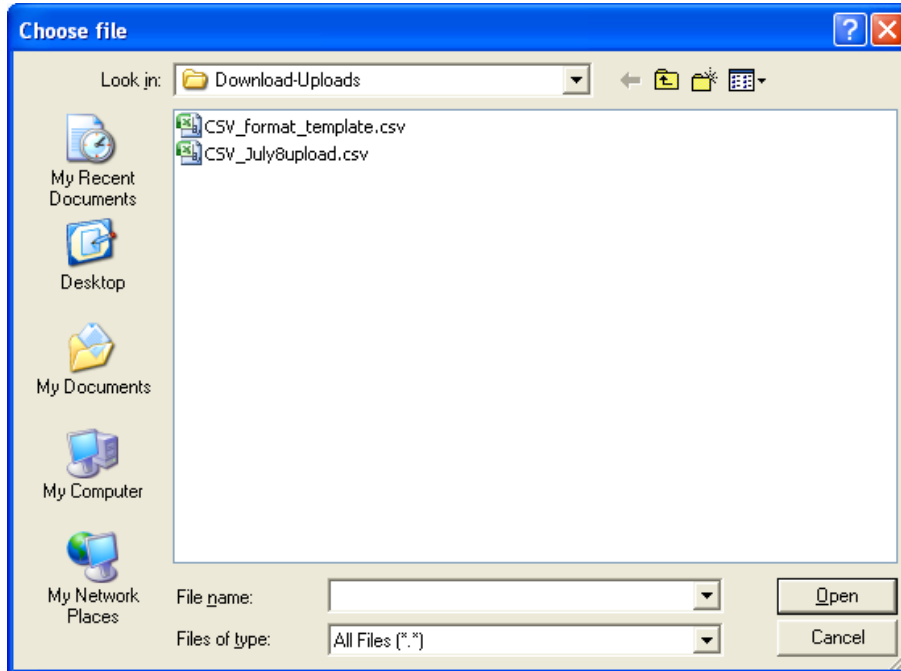
- Notes:**
- A single upload file can contain both types of transactions.
  - Large text entries should not contain commas (which are interpreted as field delimiters). Use dashes or other keyable characters.
  - For more information, see [Umler Bulk Upload Transactions CSV File Specifications](#). Also available through Umler References.

When all file preparation is complete, continue with [Uploading the CSV Component Registry File](#) on page 43.

## Uploading the CSV Component Registry File

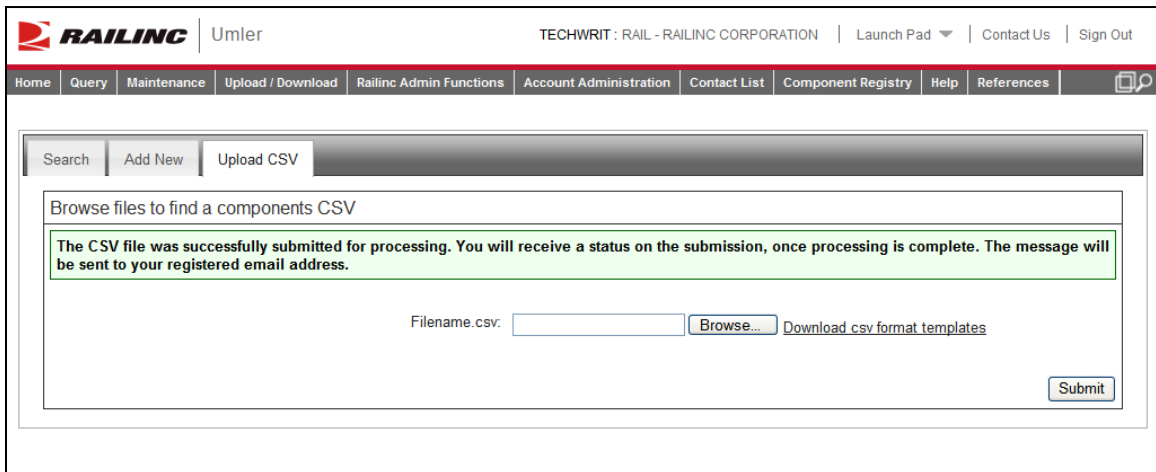
4. Select the **Browse** button to locate the file for upload. The Choose file panel is displayed ([Exhibit 58](#)).

**Exhibit 58. Choose File (for Upload)**



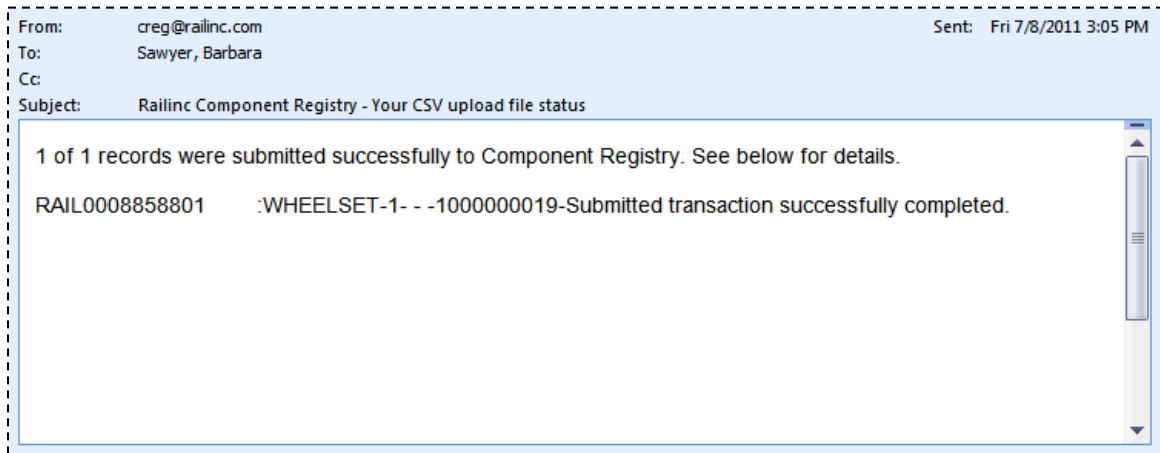
5. Either double-click the file, or highlight it and select **Open**. The Browse Files to Find a Components CSV is redisplayed with the selected file (not shown).
6. Select **Submit**. A message is displayed ([Exhibit 59](#)).

**Exhibit 59. Browse Files to Find a Components CSV (after successful submission)**



7. Check user e-mail for a status message ([Exhibit 60](#)).



**Exhibit 60. E-Mail for Upload Submission Status**

If errors occurred in processing the file, those errors are identified by Component ID and field-by-field. These details can assist in correcting the upload file before uploading and submitting again.

8. (optional) If no errors were identified, validate a few records in the upload to determine appropriate changes have been made. (e.g., deleted components are *not* found, new components are found, fields changed reflect those changes, etc.). Use the Component Registration Search function as described in the *Umler™ Component Registry User Guide*.

## Index

- AC (add component), 41
- action codes, 1
- add
  - Component Transaction Type (AC), 41
- add equipment
  - articulated, 34
  - CSEGE, 12
  - multiple unit car, 34
  - pool assignment, 8
  - single, 32
- air brake inspection, 20
- articulated unit
  - add, 34
  - example, 34
- associate
  - Transaction Type (CA), 42
- autorack activity, 24, 25
- CA (associate component), 42
- Car Grade Inspection
  - report, 17
- CC (change component), 41
- change
  - Component Transaction Type (CC), 41
- CN (nullify association), 42
- comma delimited files, 1
- company-specific equipment group. *See* CSEGE
- component (delete), 39
- create
  - CSEGE, 9
  - pool header, 5
  - transaction file, 3
- CSEGE
  - add equipment, 12
  - create, 9
  - delete, 11
  - edit, 10
  - remove equipment, 13
- CSV, 40
  - CEPM association upload file preparation, 42
  - CEPM upload file preparation, 41
  - CEPM upload file submission, 43
  - CEPM upload validation, 44
- CSV Transaction Files
  - Add Equipment, 32
  - add equipment to Company-Specific Equipment Group, 12
  - Add multiple unit Equipment, 34
  - create Company-Specific Equipment Group, 9
  - create pool header, 5
  - creating, 3
  - delete Company-Specific Equipment Group, 11
  - delete pool header, 6
  - door lube inspection, 22
  - edit Company-Specific Equipment Group, 10
  - equipment maintenance party, 19
  - FRA Locomotive Inspection, 28, 29, 30
  - Modify Equipment, 37
  - remove equipment from Company-Specific Equipment Group, 13
  - remove lessee, 14
  - remove Lessee, 14
  - report air brake test inspection, 20
  - report autorack activity, 24, 25
  - report car grade inspection, 17
  - Report Car Grade Inspection, 17
  - Report Reflectorization Event, 30
  - update Equipment Maintenance Party, 19
  - update equipment management codes, 15
  - Update Equipment Management Codes, 15
  - update pool assignment, 8
  - update pool header, 7
  - vehicular flat car certification, 26
- DC (delete component), 41
- delete
  - component, 39
  - Component Transaction Type (DC), 41
  - CSEGE, 11
  - element, 38
  - pool header, 6
- door lube inspection, 22
- drawbar unit
  - add, 34
  - example, 34
- edit CSEGE, 10
- element (delete), 38
- Equipment Maintenance Party, 19
- Equipment Management Codes (update), 15
- event (Report Reflectorization), 30
- CSV format, 1
- format (CSV), 1
- FRA locomotive inspection, 28, 29, 30
- inspection
  - air brake, 20
  - car grade, 17
  - door lube, 22
  - FRA locomotive, 28, 29, 30
  - locomotive, 28, 29, 30
- Lessee
  - remove, 14
- lessee, remove, 14
- Modify Equipment (single), 37
- nullify
  - Transaction Type (CN), 42
- pool assignment
  - add equipment, 8
  - remove equipment, 8
  - update, 8
- pool header
  - create, 5
  - delete, 6
  - update, 7
- Registration
  - Upload CSV, 40
- remove
  - equipment from CSEGE, 13
  - lessee, 14
  - Lessee, 14
  - pool assignment, 8
- report
  - autorack activity, 24, 25
  - Car Grade Inspection, 17
  - FRA locomotive inspection, 28
  - reflectorization event, 30
  - vehicular flat car certification, 26
- Report Reflectorization Event, 30
- transaction
  - basics, 1
  - bulk Umler upload, 1
- Transaction Type, 41
  - AC, 41
  - CA, 42
  - CC, 41
  - CN, 42

- DC, 41
- upload, 41
- upload association, 42
- Transaction Types
  - descriptions, 3
  - multiple, 1
- Umler
  - legacy 3.1 format, 1
  - new 3.2 format, 1
  - transaction upload, 1
- update
  - equipment maintenance party, 19
  - Equipment Maintenance Party, 19
  - equipment management codes, 15
  - Equipment Management Codes, 15
  - pool assignment, 8
  - pool header, 7
- upload
  - comma delimited, 1
  - formats, 1
  - Umler transactions, 1
- Upload CSV, 40
  - CEPM association file preparation, 42
  - CEPM association template, 42
  - CEPM file preparation, 41
  - CEPM template, 41
  - e-mail status, 43
  - overview for CEPM, 40
  - upload submission, 43
  - validation, 44
- validate CSV upload, 44
- vehicular flat car certification, 26